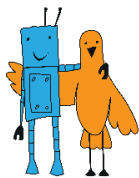


## «LINE FOLLOWER» CONTEST RULES «LINE PRO» CATEGORY

*Version 3.0 dated July 20, 2017.*

### Contents

<b>1. Specifications of the field and lines .....</b>	<b>2</b>
<b>2. Requirements for the Robot .....</b>	<b>2</b>
<b>3. Contest procedure.....</b>	<b>2</b>
<b>4. Scoring .....</b>	<b>2</b>
<b>5. Revision History.....</b>	<b>3</b>



## 1. Specifications of the field and lines

General requirements for the field and lines are given in the general contest rules.

There are the following specifications of the "Line pro" category:

line width: 50 mm;

radius of curvature: not less than 300 mm.

Start/finish lines are yellow.

The line in this category is a strip of homogeneous objects.

## 2. Requirements for the Robot

General requirements for the robot are given in the general contest rules.

There are the following specifications of the robot in the "Line pro" category:

length: not more than 40 cm;

width: not more than 40 cm;

weight: not more than 10 kg.

The length and the width of the robot may change after the start.

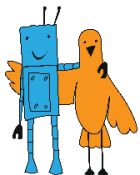
## 3. Contest procedure

General contest procedure are given in the general contest rules.

In order to complete one attempt the robot is given the 1 minute.

## 4. Scoring

The scoring is given in the general contest rules.



## 5. Revision History

<b>№</b>	<b>Doc. No.</b>	<b>Date</b>	<b>Note</b>	<b>Previous version</b>	<b>Update version</b>
<b>1</b>	<b>2</b>	<b>3</b>	<b>4</b>	<b>5</b>	<b>6</b>
1.	3.0	Entire text cahnged		On the base of version 2.2	
2.					
3.					
4.					
5.					
6.					
7.					
8.					
9.					
10.					
11.					
12.					
13.					
14.					
15.					